

monitillo 1980
PRESENTS

Year 2021 - NUMBER 0

I B
N R
S E
P A
I T
R H
I N
N I
G G

Special edition.

TEN PAINTINGS.
TEN DESIGNS.

We associated ten famous paintings with the designs of our Walls&Floors collection.

THIS IS OUR INSPIRATIONAL MAGAZINE.



monitillo 1980
museum collection

BREATHING MEANS LETTING IN, TRANSFORMING
AND FINALLY LETTING GO. THIS IS WHAT WE DO AS
A **MARBLE COMPANY** IN OUR DAILY WORK.
WE LET IN WHAT MOVES US, WE TRANSFORM IT
AND EXPRESS IT IN WHAT WE PRODUCE.
TO US, **INSPIRING** MEANS SHARING
WHAT ENGAGES US, WHAT NOURISHES US.

The *Monitillo 1980 Museum Collection* was created
by joining these two elements.

This is how we came to connect ten famous paintings
with the designs of our Walls&Floors collection.

We did it within the framework of a new project:
an *inspirational magazine* that bears our name because
inspiring means breathing. We created this magazine to
remind ourselves that beautiful things enrich you,
that we need to breathe and get inspired.

Ten: the designs of our Walls&Floors collection.
Ten: the paintings that inspire us.

Welcome to the Monitillo1980 Museum Collection.

MENU - rooms

Swipe or click on the room you want to start from.



Room 01



Room 02



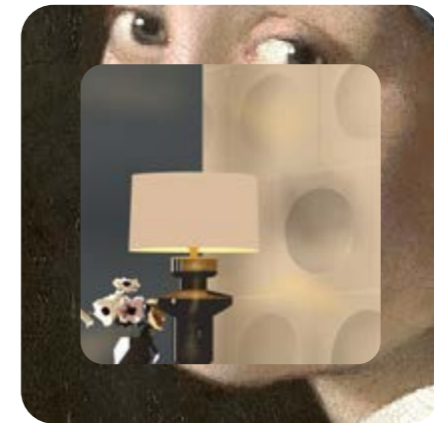
Room 03



Room 04



Room 05



Room 06



Room 07



Room 08

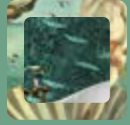


Room 09



Room 10

When you want to go back to the menu
click on the icon at the left top of the chapter.



back to menu



Room 01

THE BIRTH OF VENUS, SANDRO BOTTICELLI.

PROFONDO.

No other painting could have been more appropriate than The Birth of Venus by Sandro Botticelli to present our design Profondo.

Beauty comes with a blow, from who knows where. Yet, it is real and changes everything.

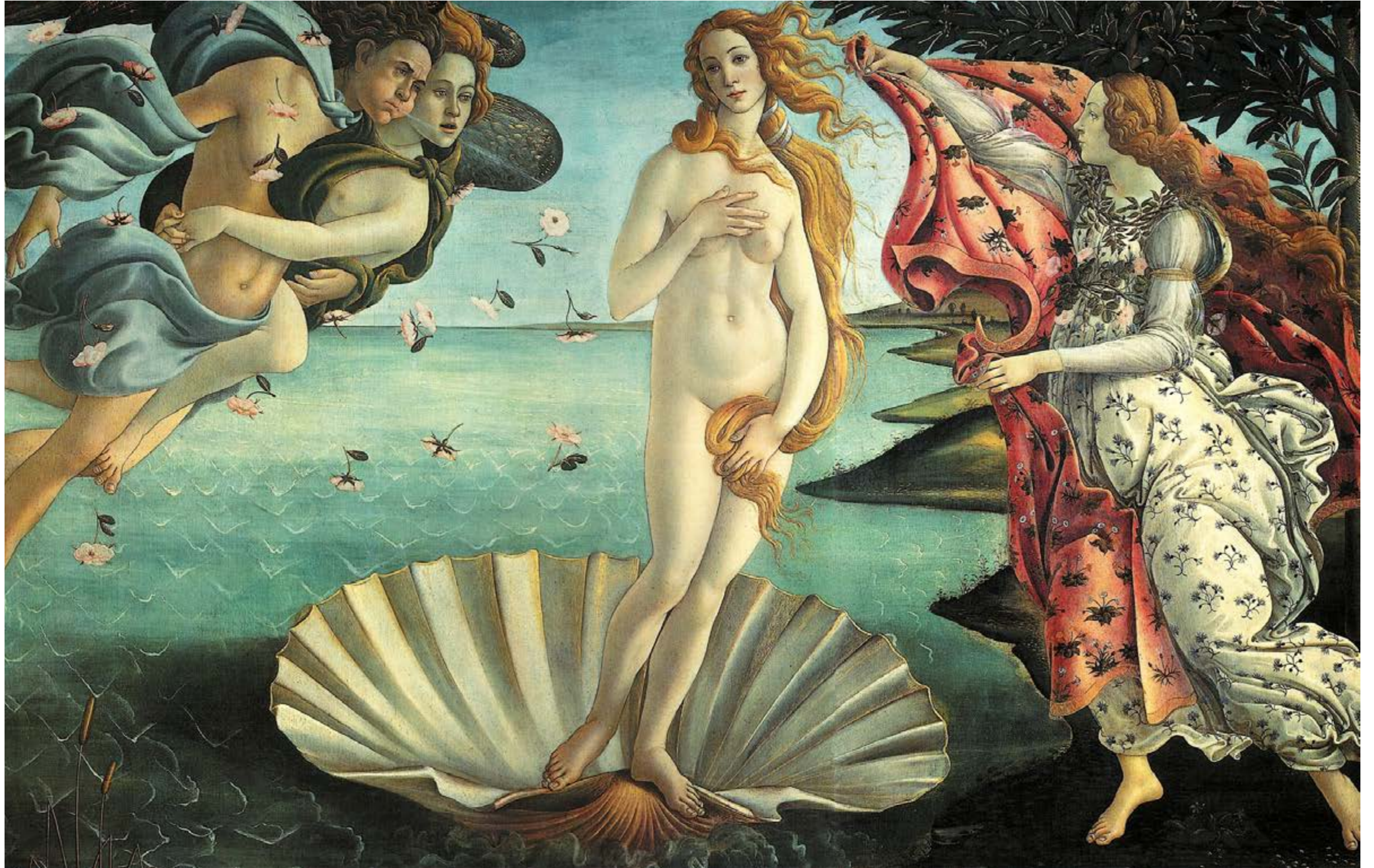
DELICATE

BEAUTY

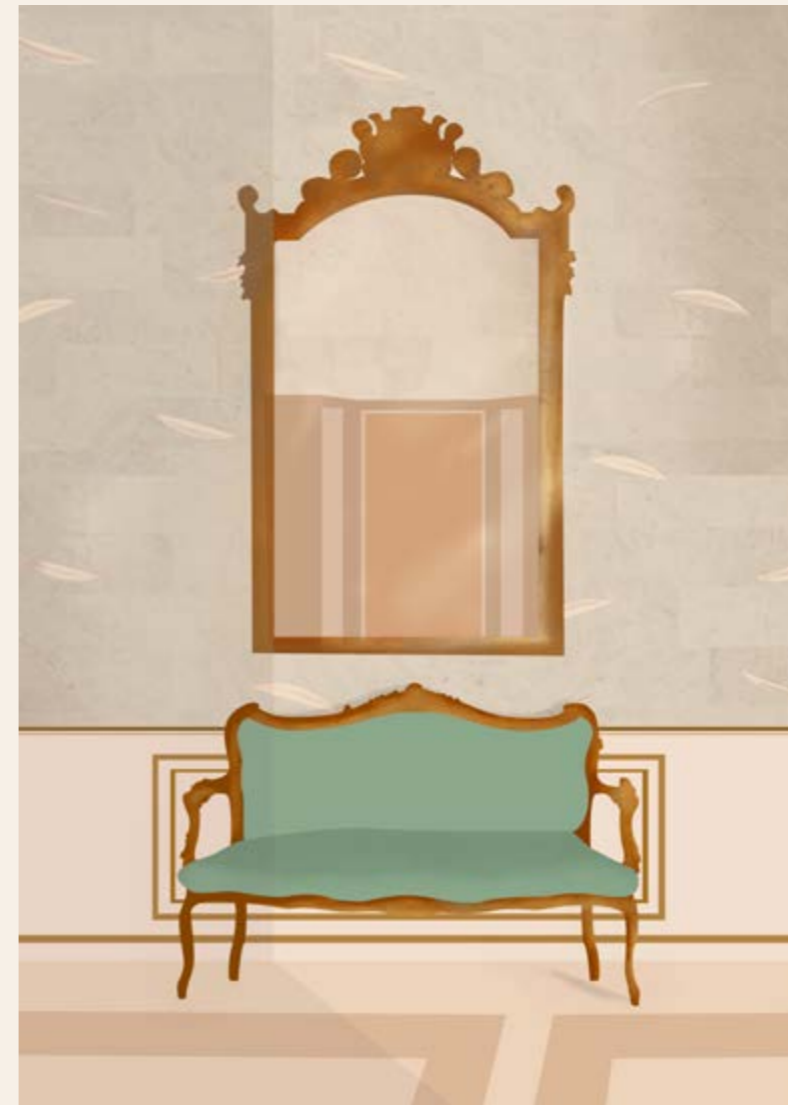
DIVINE



THE BIRTH OF VENUS, SANDRO BOTTICELLI - PROFONDO



PROFONDO



Profondo is the wall covering in marble decorated with cuts made both of soft and sharp lines.



Soft shapes,
a delicate sensuality,
an indefinite beauty.
Timeless, divine.





back to menu



Room 02

THE STAR, EDGAR DEGAS.

MAREA.

Only The Star by Edgar Degas could be matched with our design Marea. Elegance is a detail, but it's a key one.

MAREA



Marea is the wall covering with straight and oblique lines with sparkling metal details.



DETAIL



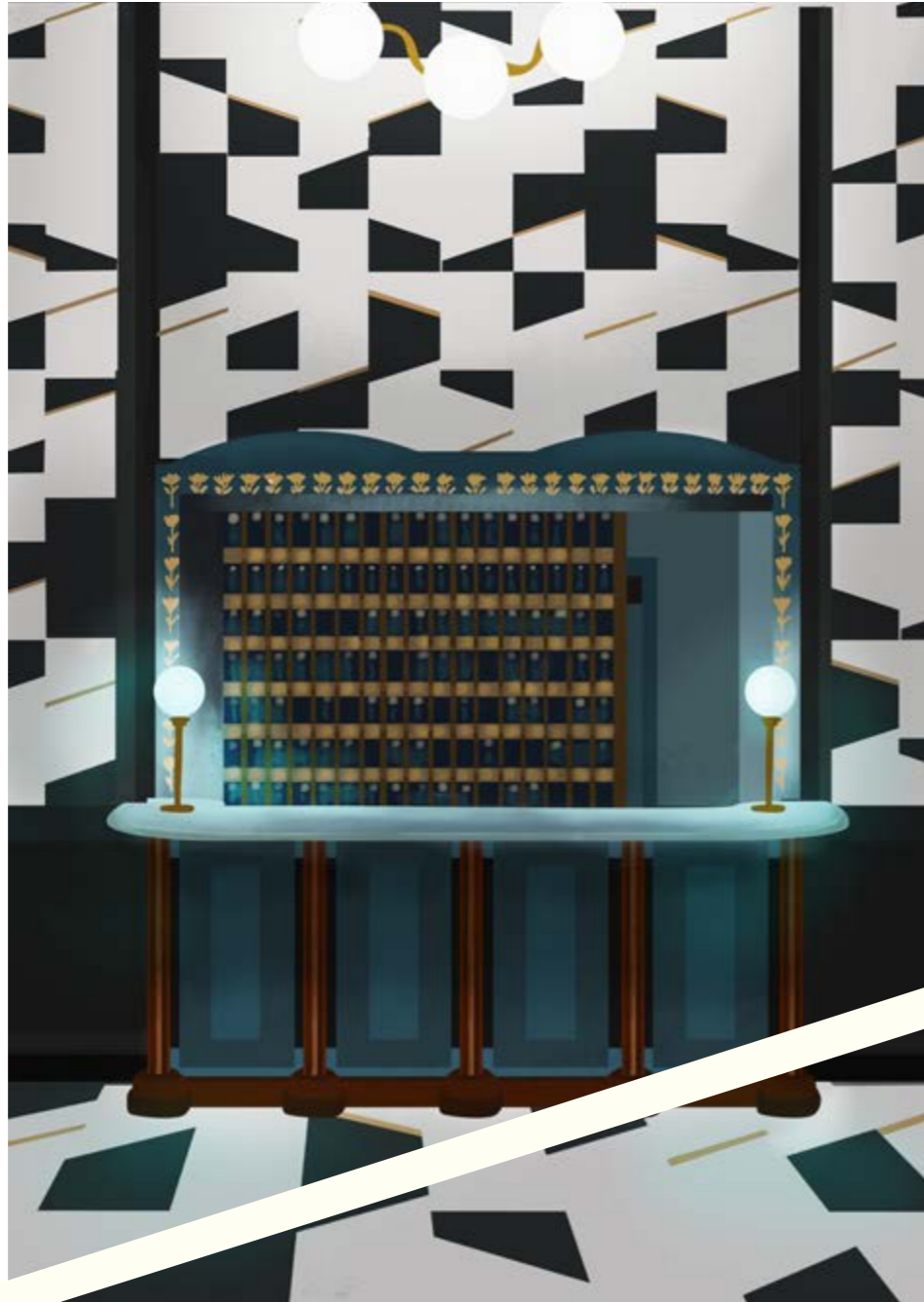
PROTAGONIST



LINE







The softness of a taut line,
refined and protagonist:
the only detail.
All the rest is scene.



back to menu

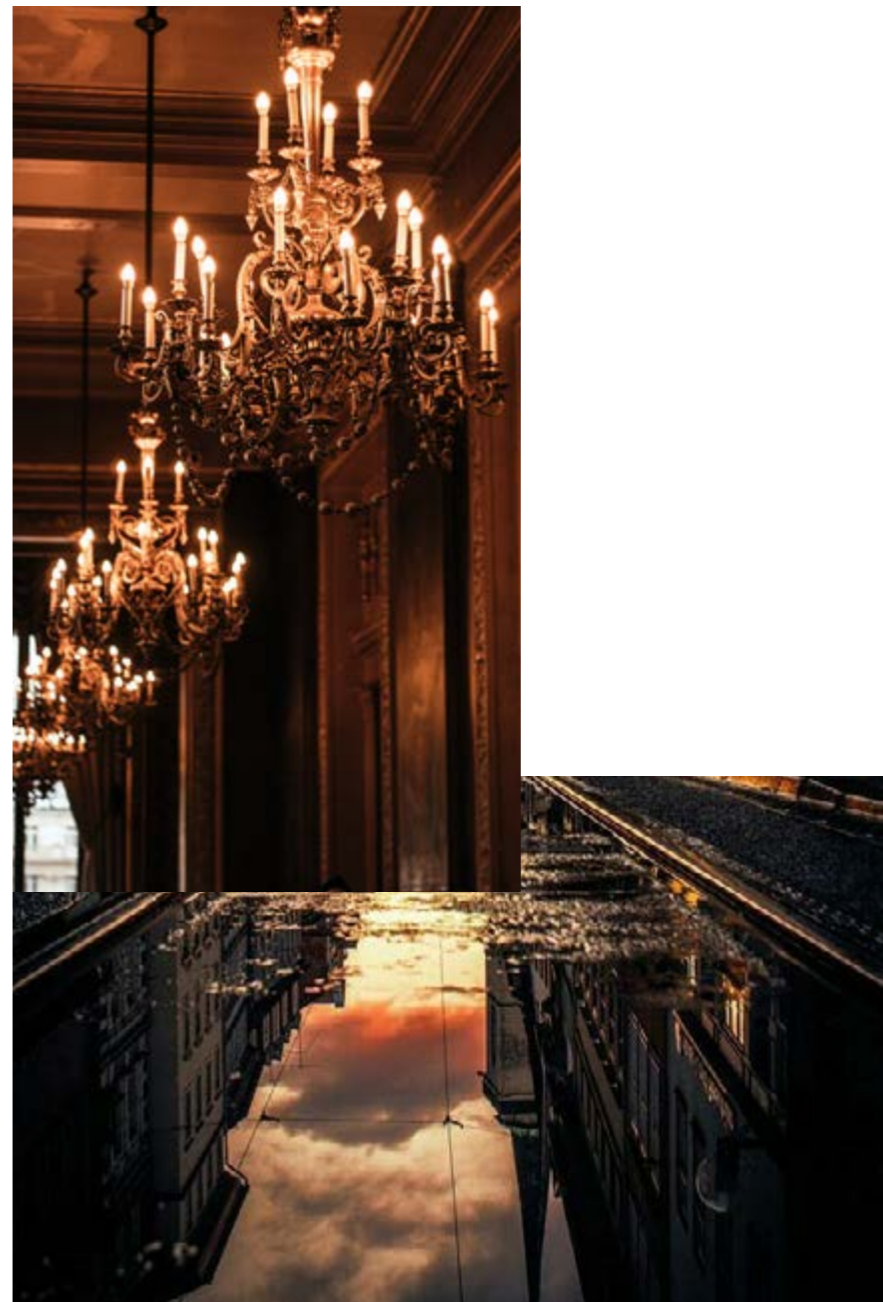
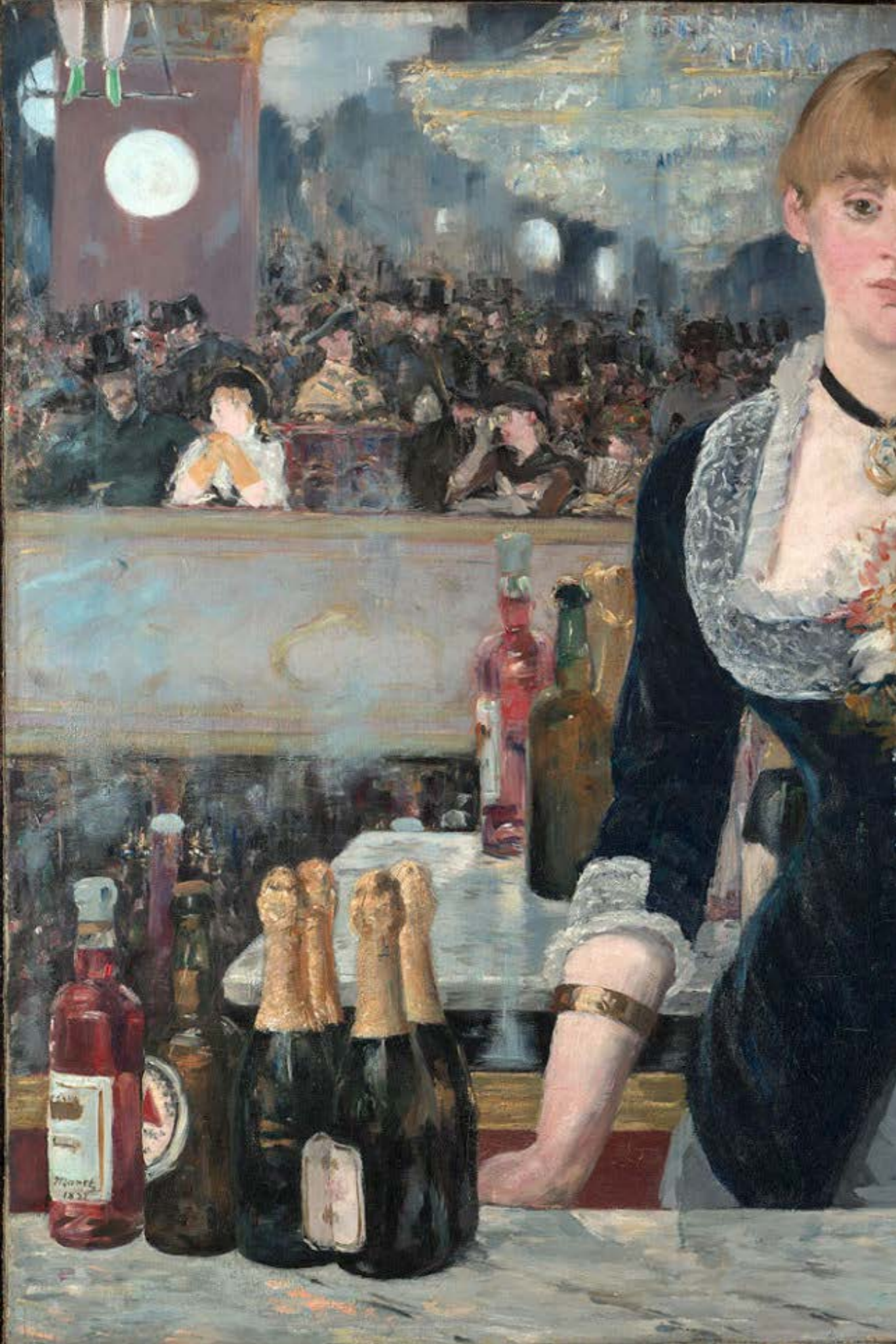


Room 03

A BAR AT THE FOLIES-BERGÈRE, EDOUARD MANET.

DEDALO.

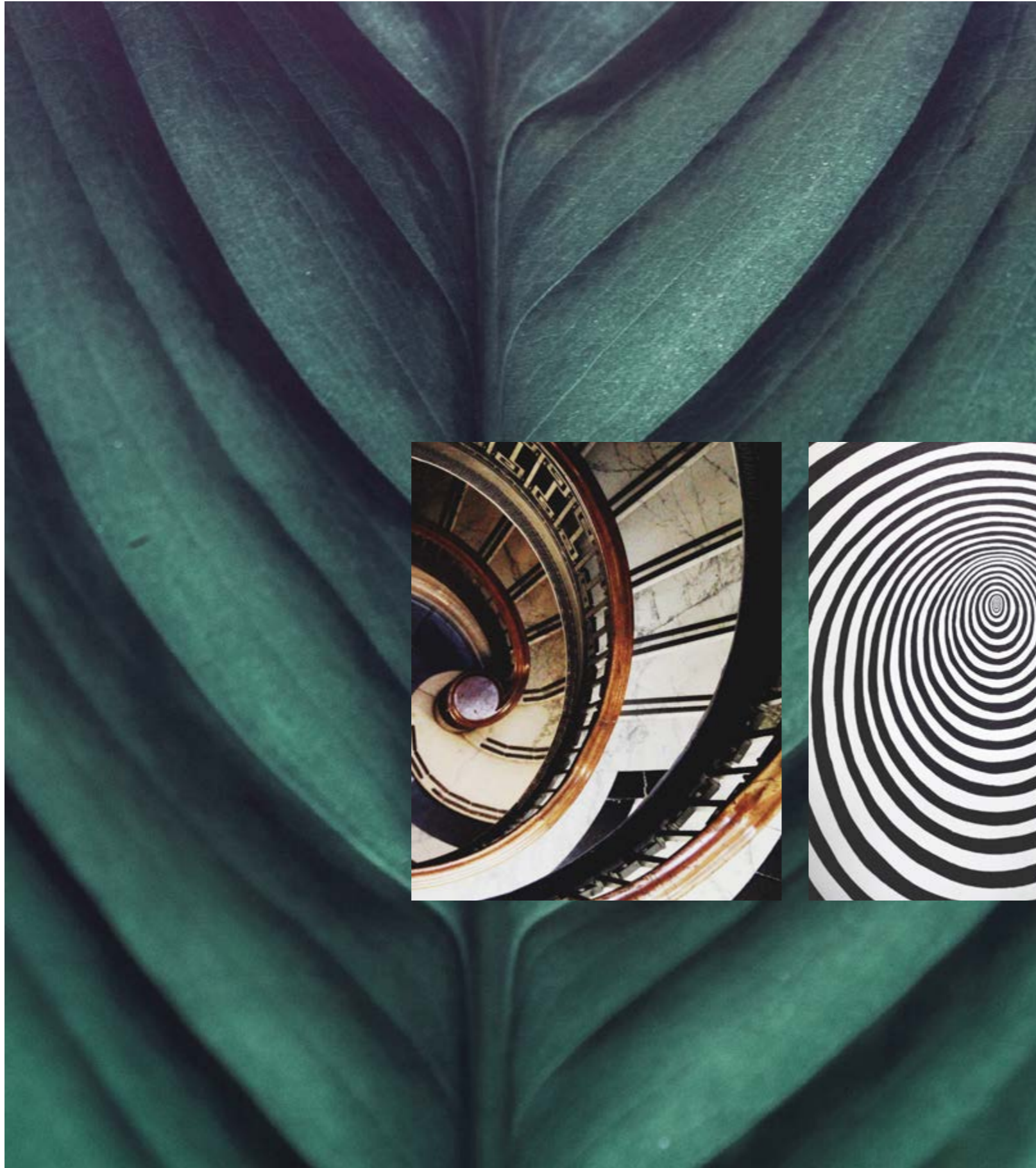
The optical effects of our design Dedalo guided us towards the painting A Bar at the Folies-Bergère by Manet.
When magic lives in reality, it can only be magnificence.



A BAR AT THE FOLIES-BERGÈRE, EDOUARD MANET - DEDALO

DEDALO OIADED





mirror

game

The illusion of senses,
a game of mirrors over the
infinite. Simply magic.

Dedalo is a dynamic texture that creates immersive scenarios.



infinite

illusion

magic



back to menu



Room 04

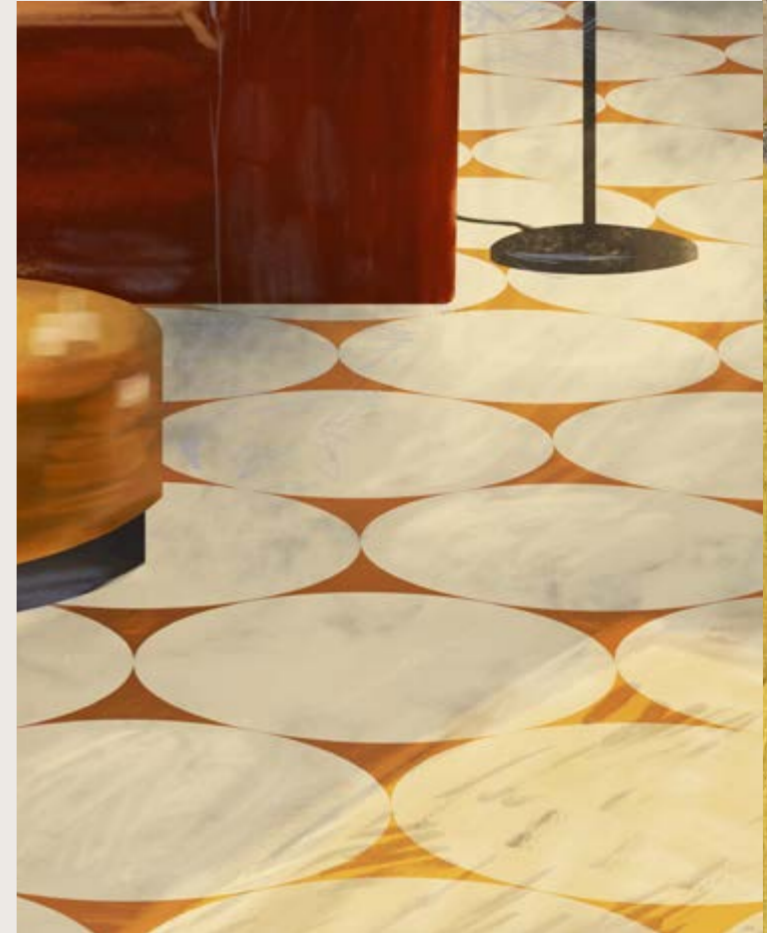
THE KISS, GUSTAV KLIMT.

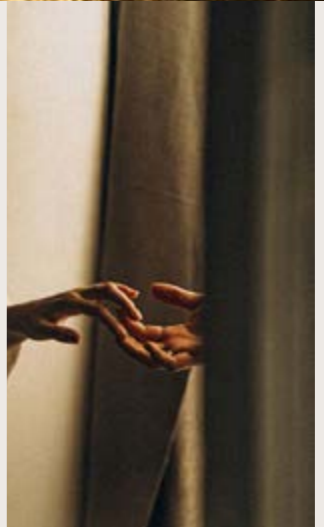
IRIDE.

Matching our design Iride with The Kiss by Klimt was instinctive,
two elements that can be different yet inseparable.



IRIDE





U N I O N

D R E A M

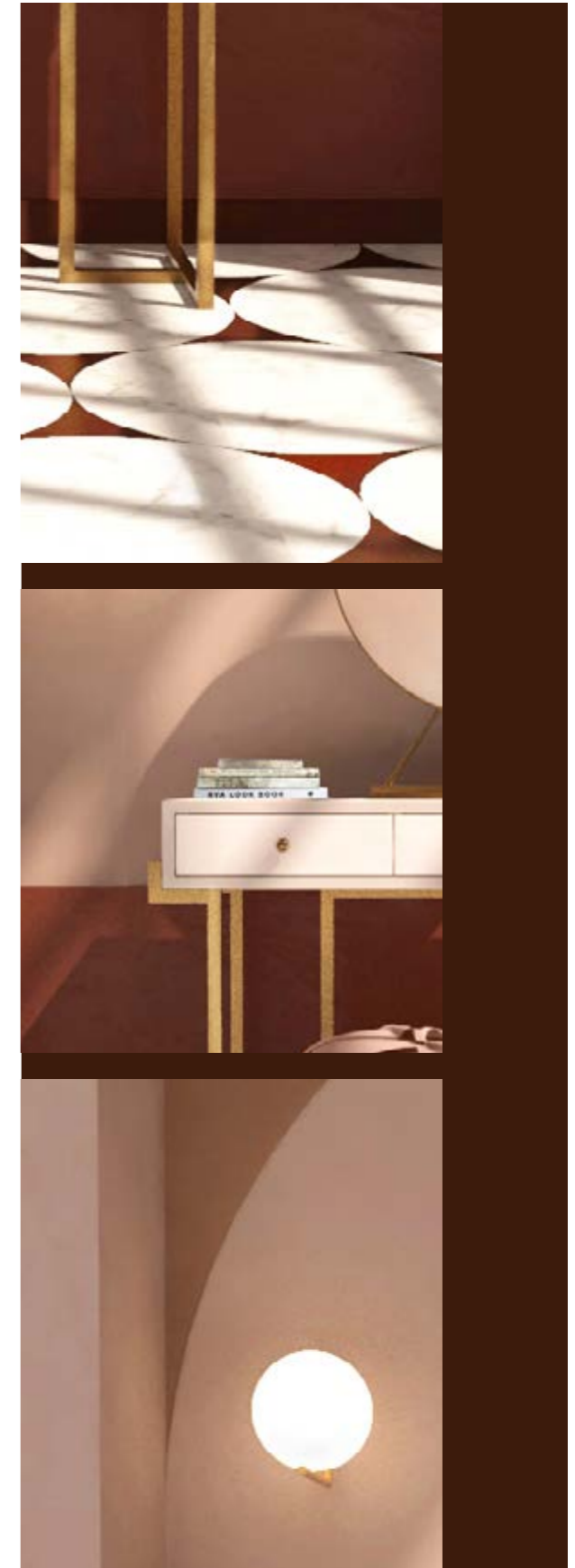
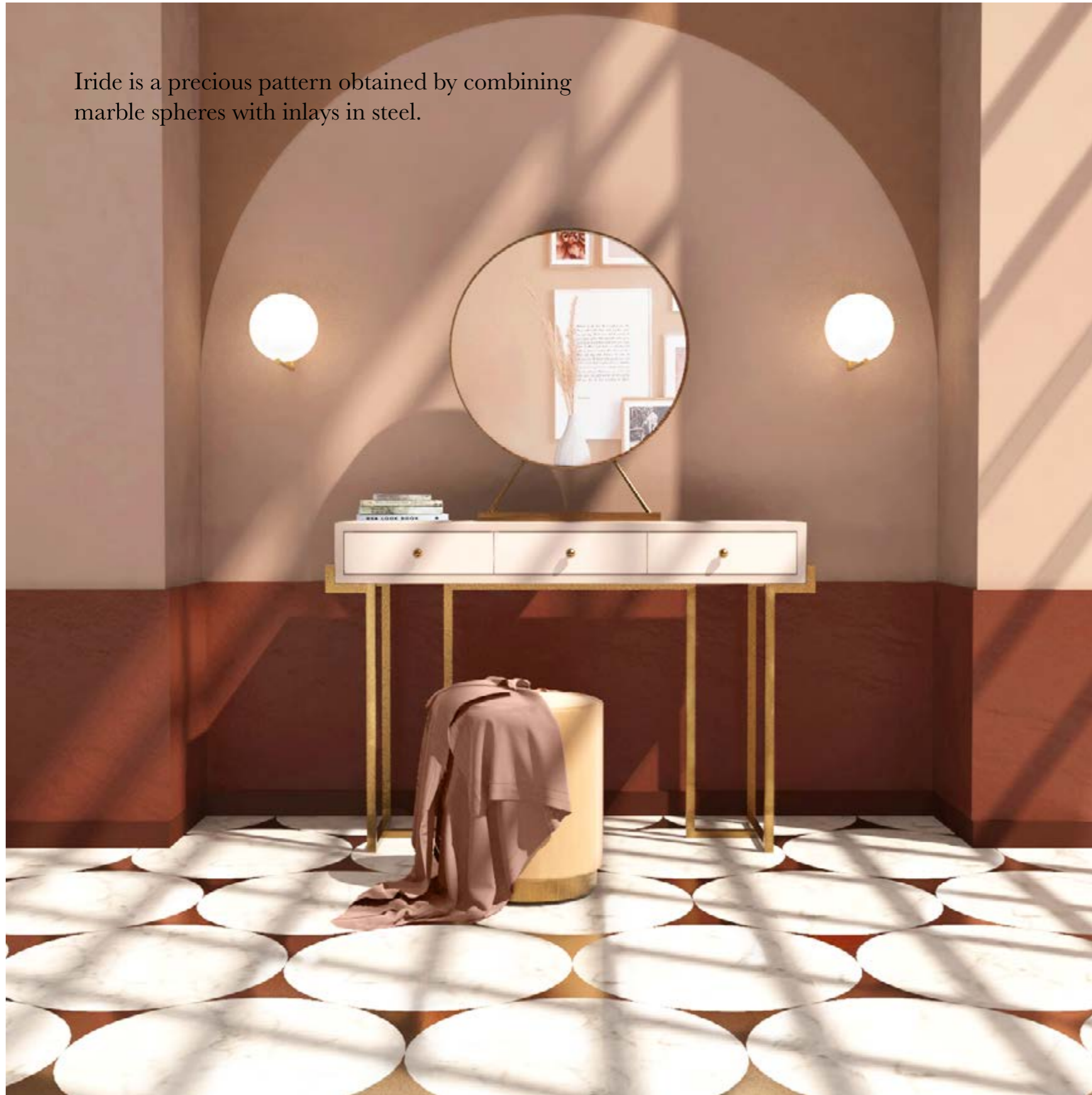
P R E C I O U S



An enchanting union,
the emotions of a dream,
the locking of their forms over a precious expanse.



Iride is a precious pattern obtained by combining marble spheres with inlays in steel.





back to menu



Room 05

THE GREAT WAVE OFF KANAGAWA, KATSUSHIKA HOKUSAI.

PUNTO.

We needed The Great Wave off Kanagawa, a steady force, to show you our design Punto.



PUNTO

Punto is the wall coverings in marble that comes with round inlays in steel.

MOMENT



CONTROLLED
FORCE

富嶽三十六景
神奈川沖
波裏

大井川





THE GREAT WAVE OFF KANAGAWA, KATSUSHIKA HOKUSAI - PUNTO





A portrait
of controlled force,
with a sober style,
the order of chaos,
the picture of a moment.





back to menu



Room 06

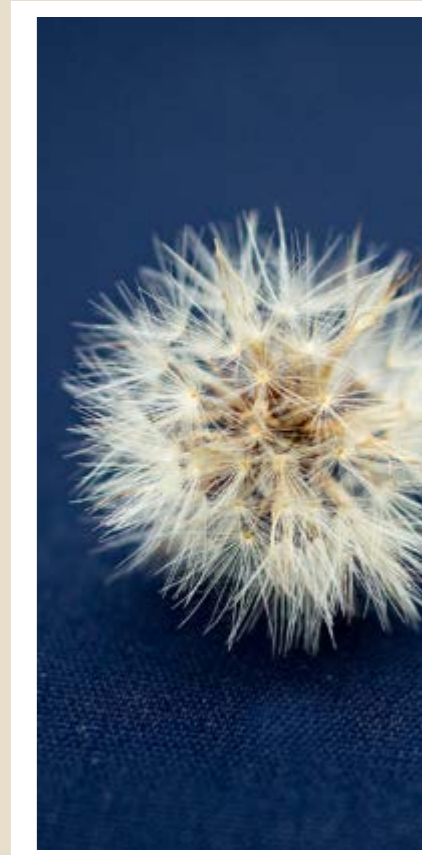
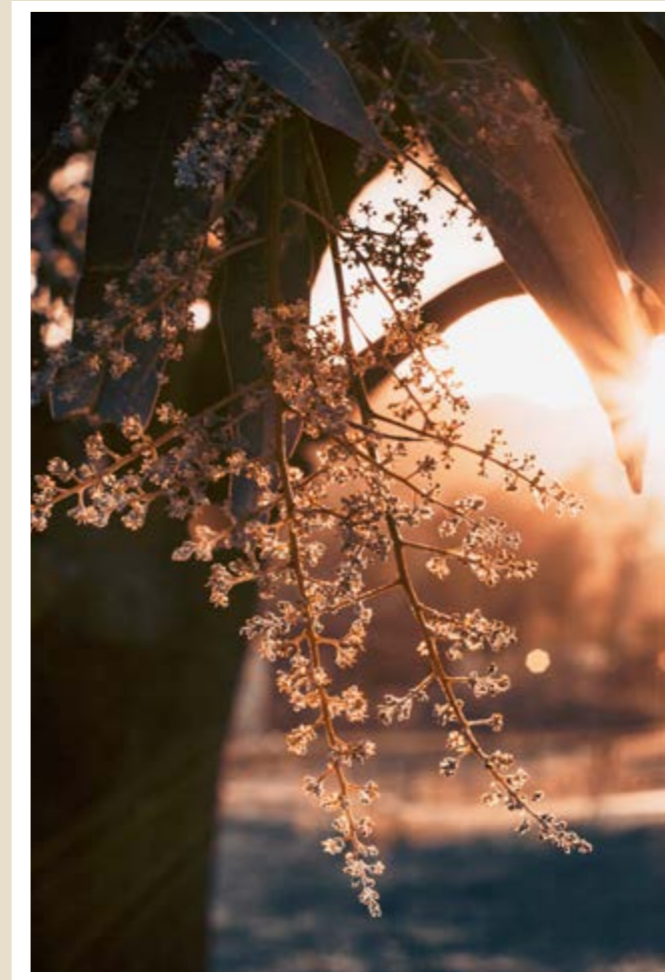
GIRL WITH A PEARL EARRING, JOHANNES VERMEER.

CAVA.

Only a portrait like Girl with a Pearl Earring could have introduced our design Cava.
The delicacy of light brings out her beauty.

Delicacy Caressing Light Discovery





When light discovers, light highlights.
Caressing shapes,
light can modify.
It's not simply delicacy:
it's the delicacy of light.





CAVA

Cava is a wall covering characterized by central, rounded carvings. Its essential geometry creates three dimensional effects as well as an enchanting play of lights.





GIRL WITH A PEARL EARRING, JOHANNES VERMEER - CAVA



back to menu



Room 07

THE LUNCHEON OF THE BOATING PARTY, PIERRE-AUGUSTE RENOIR.

TRACCIA.

The Luncheon of the Boating Party accompanies Traccia, our design with straight lines that move everything around them.



THE LUNCHEON OF THE BOATING PARTY, PIERRE-AUGUSTE RENOIR - TRACCIA

TRACCIA



Traccia is a wall covering marked by tidy grooves that create dynamic effects of light and tact.

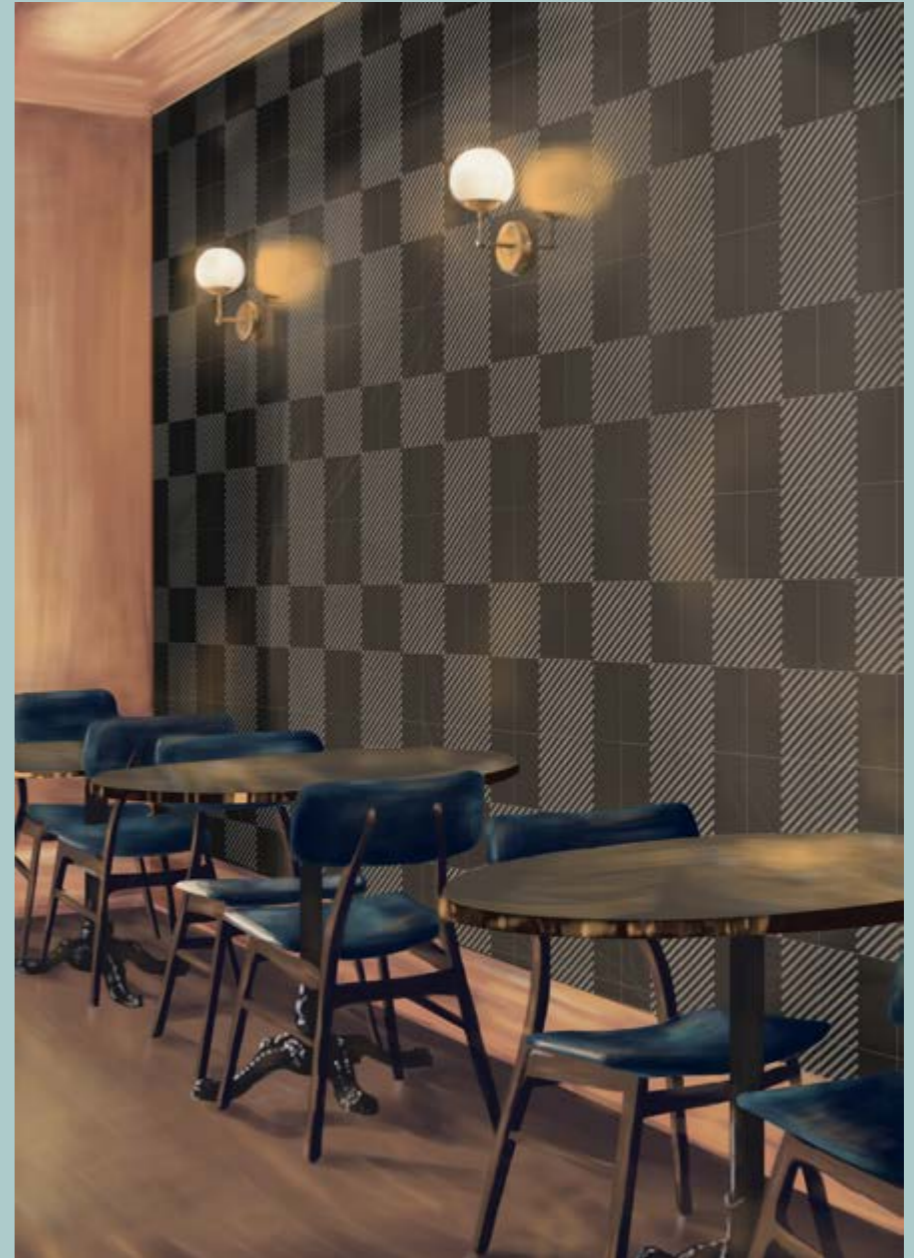


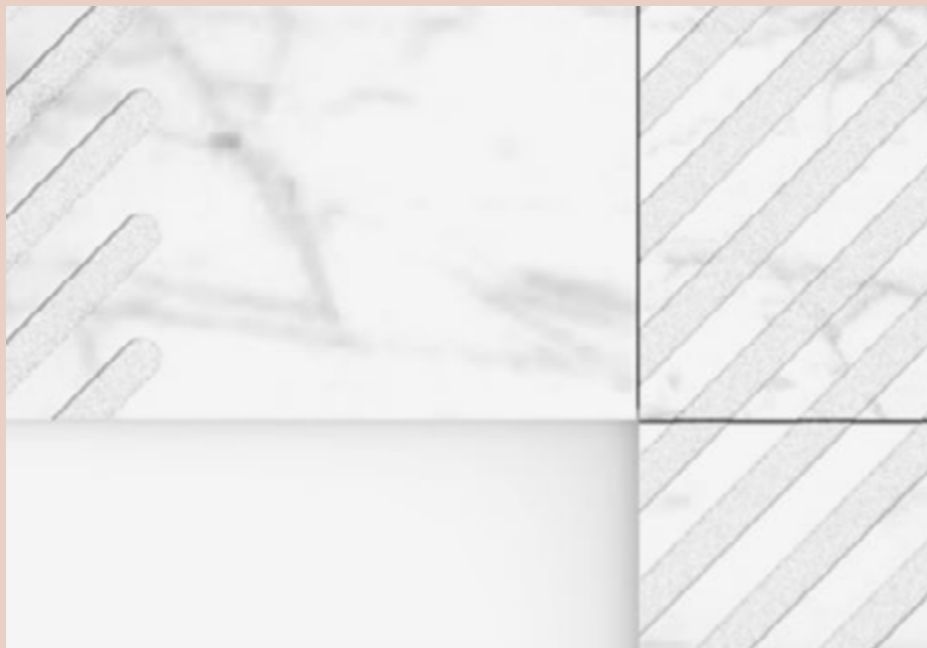
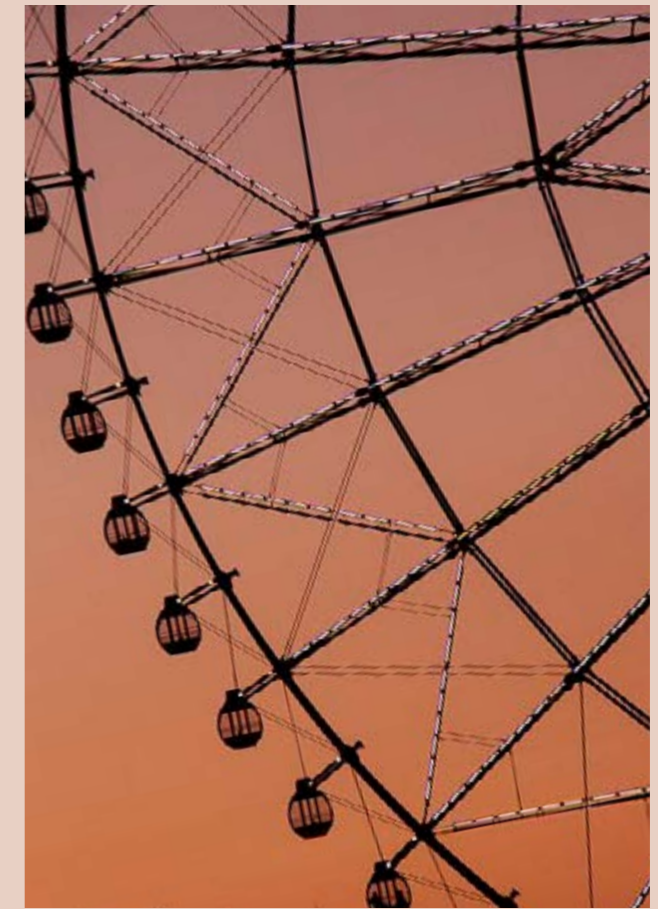
traits



living

moments





Traits that simulate instincts,
a calm momentum,
diagonal gazes:
a living composition.



back to menu



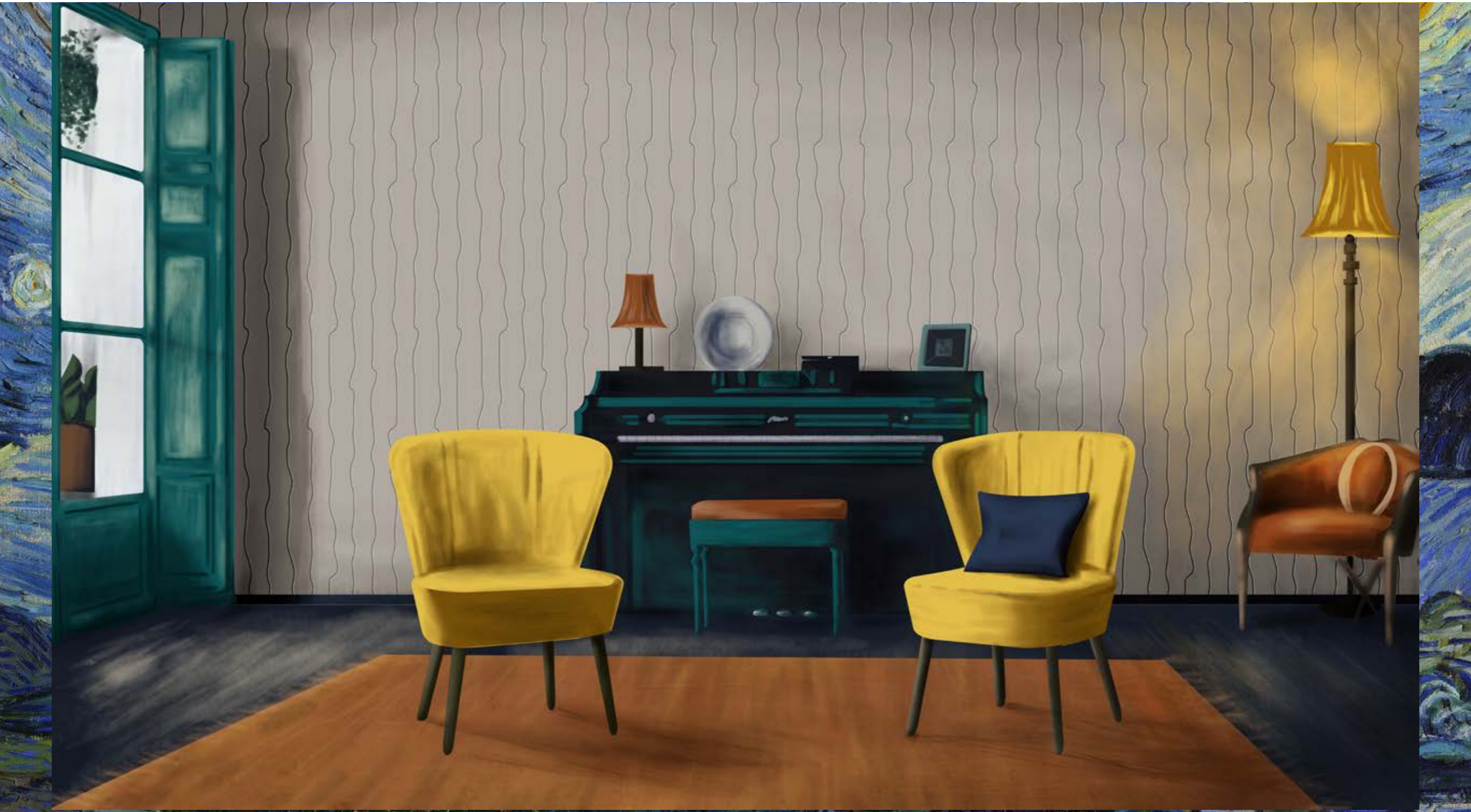
Room 08

THE STARRY NIGHT, VINCENT VAN GOGH.

SPACCO.

For Spacco we only wanted the truth of The Starry Night, a painting with the substance of reality.

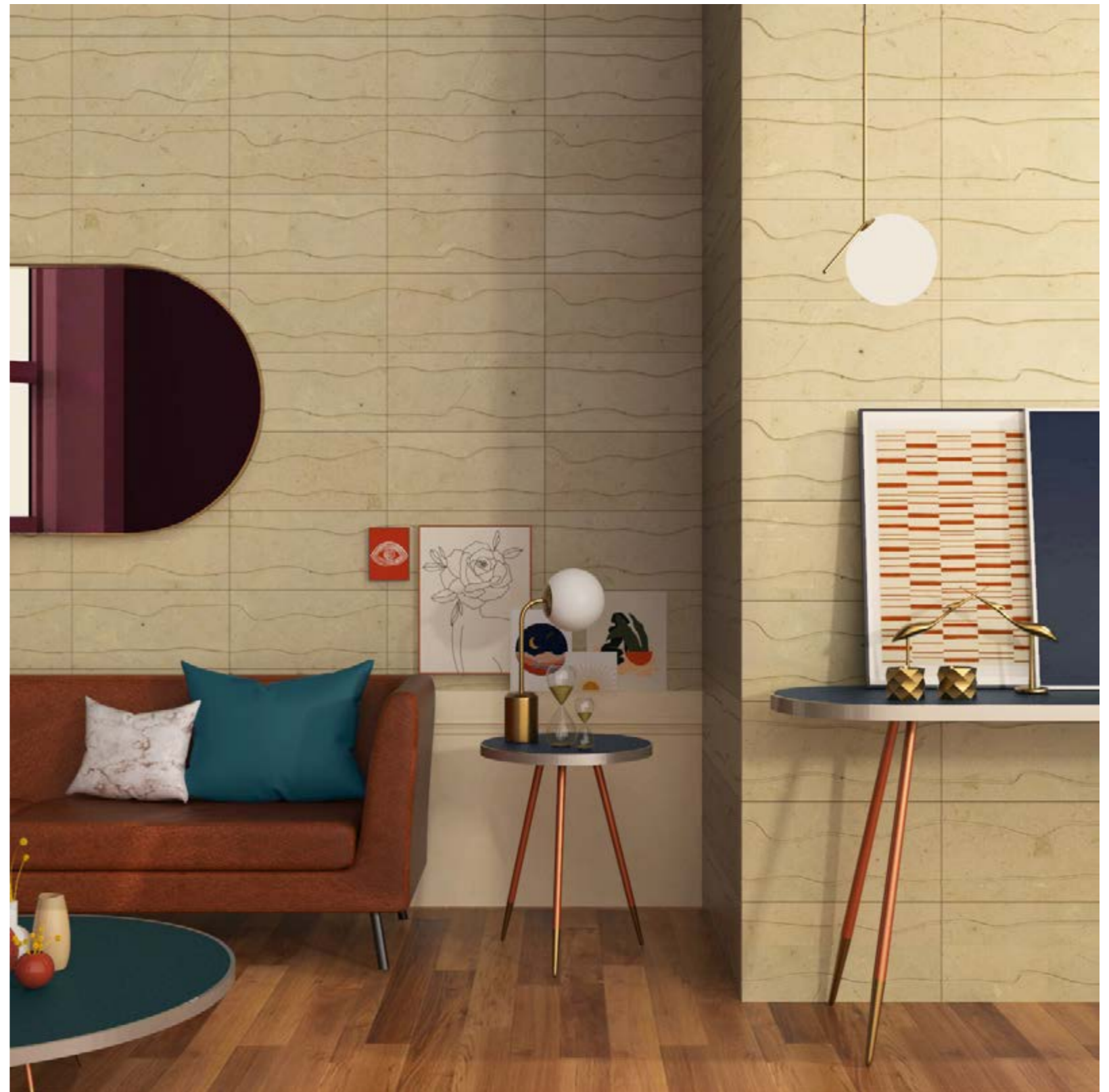
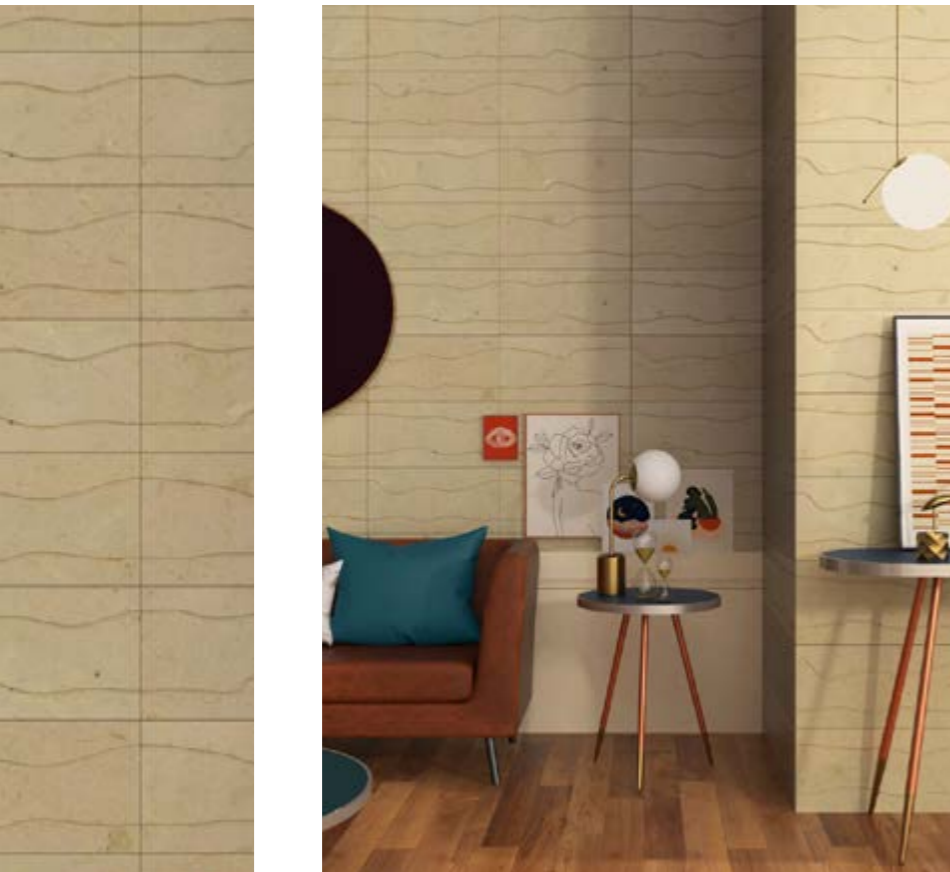
Confident brushstrokes,
strong consistency of materials
and emotional gestures give shape to interiority.





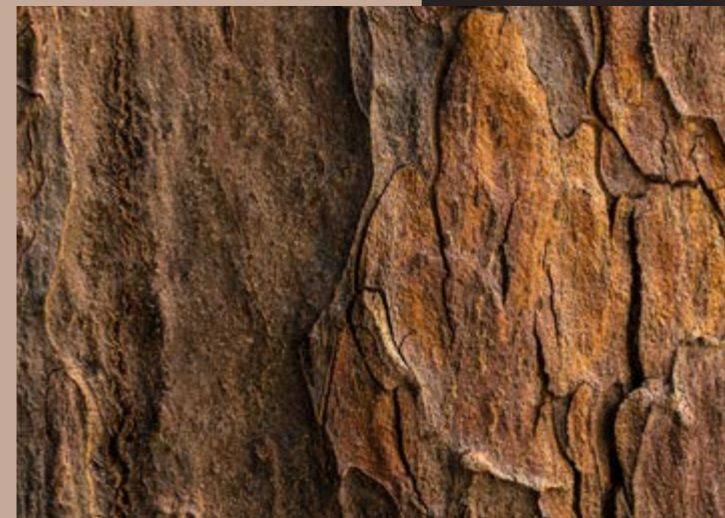
SPACCO

Spacco is the wall covering with carved, irregular lines. Its design is inspired by the natural shapes of mineral landscapes.



THE STARRY NIGHT, VINCENT VAN GOGH - SPACCO

INTERIORITY

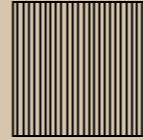


EMOTIONAL GESTURE





back to menu



Room 09

RAIN, STEAM AND SPEED, WILLIAM TURNER.

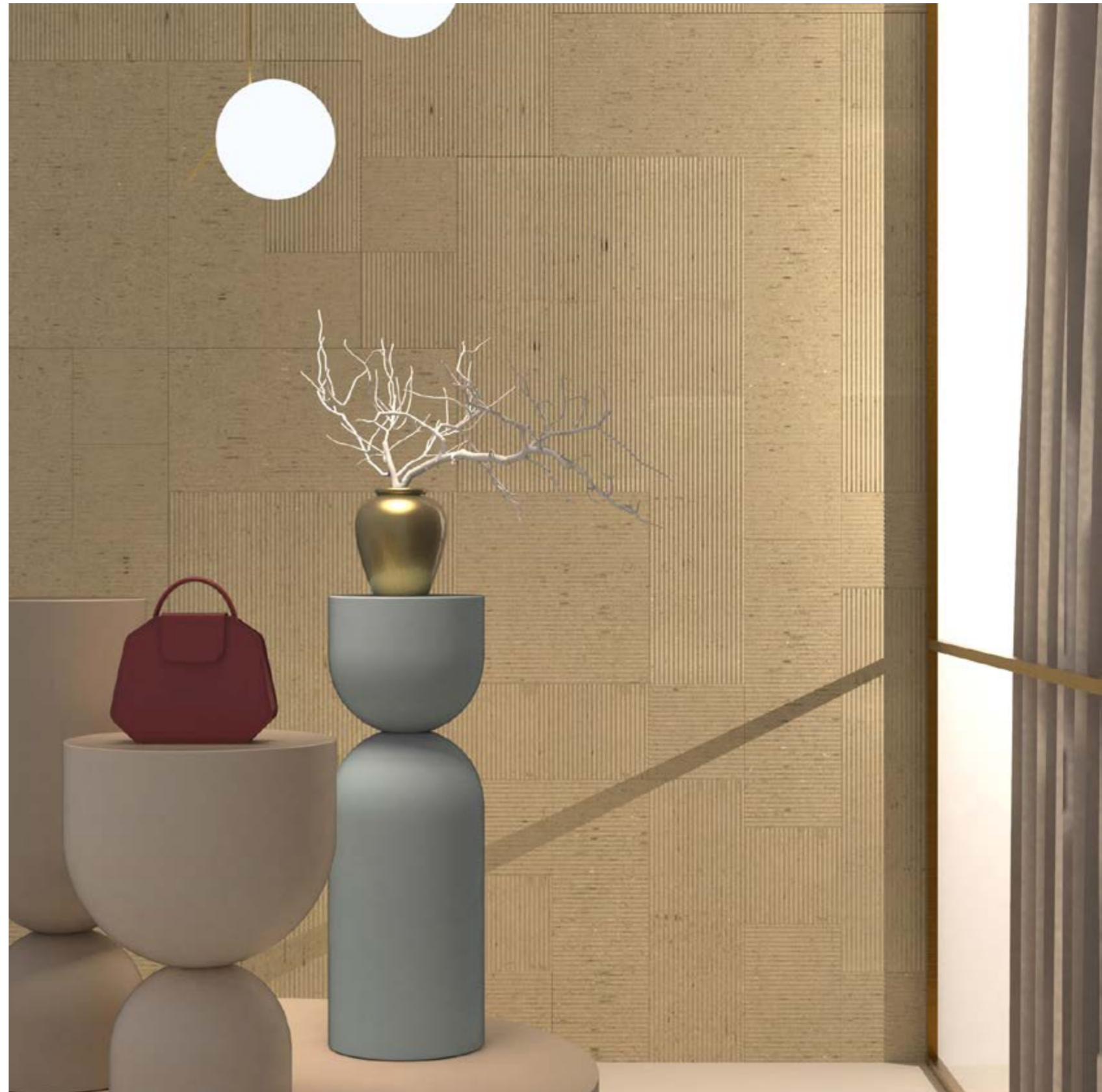
PARALLELO.

We chose Rain, Steam and Speed – The Great Western Railway by Turner to present our design Parallelo, a comparison that is equally strong in terms of contrasts and similarities.

PARALLELO



Parallelo is a wall covering with a minimal texture.
Its linear carvings create unique light effects.

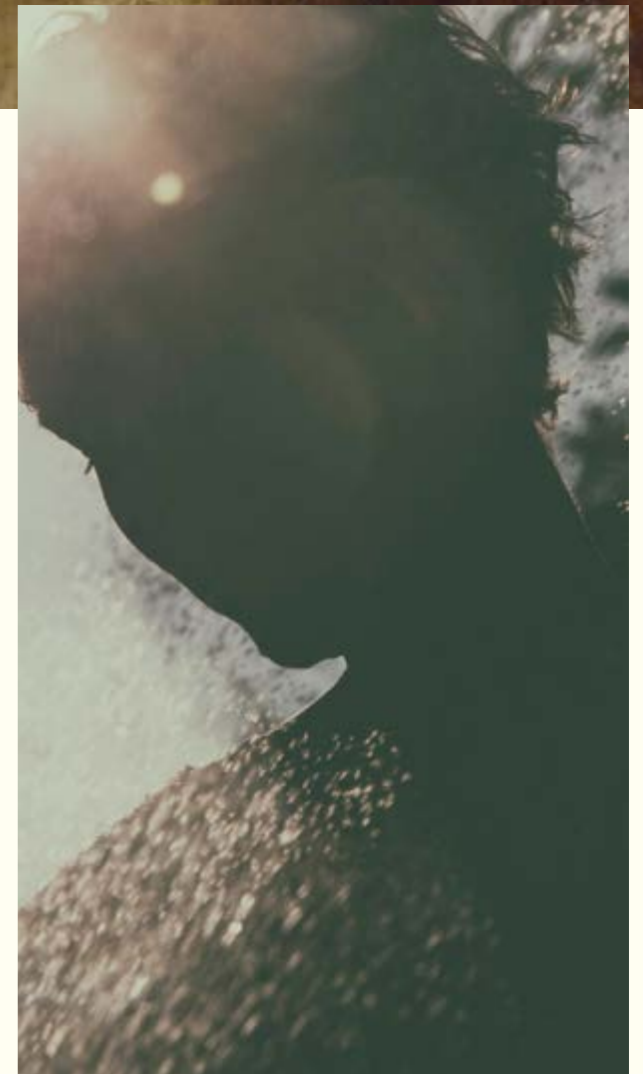


INFINITE



MOVES

SPIRIT



RAIN, STEAM AND SPEED, WILLIAM TURNER - PARALLELO



A restless spirit,
touching moves
suspended between dream and reality.
Two parallel lines cross the infinite.





back to menu



Room 10

THE JAPANESE FOOTBRIDGE, CLAUDE MONET.

VELA.

We have looked for a quiet companion for our design Vela and we found it in The Japanese Bridge by Monet.
Its silent shape brings out the best in every element of this art piece.





Reality, as in a fairy tale,
moves between reflexes,
creates and erases,
it mixes and lives.





FAIRY TALE



REFLEXES

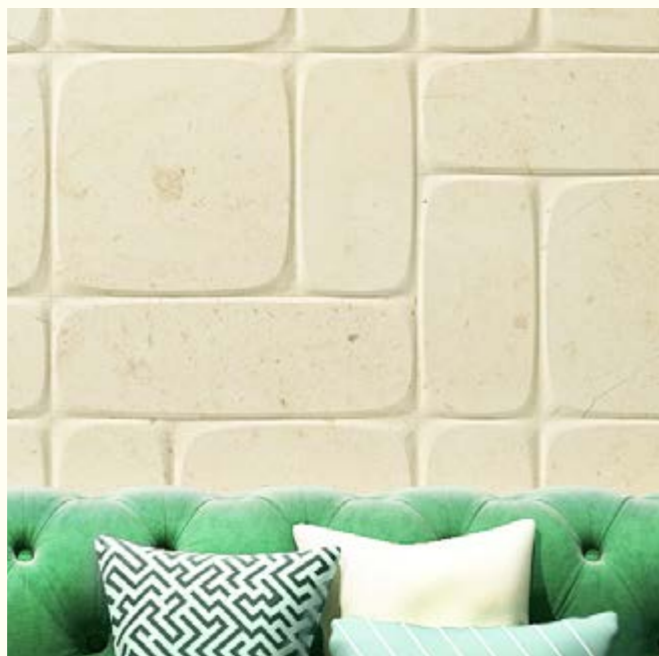


REALITY

THE JAPANESE FOOTBRIDGE, CLAUDE MONET - VELA



VELA



Vela is a wall covering with rounded geometries and soft lines that create balance in every environment.



The end... Or maybe not.

monitillo¹⁹⁸⁰



Follow us on Instagram: this month
we will guide you through the halls of our museum,
painting after painting, design after design.

For this project, we decided to focus
on our *Walls&Floors* collection.

Walls&Floors



PROFONDO



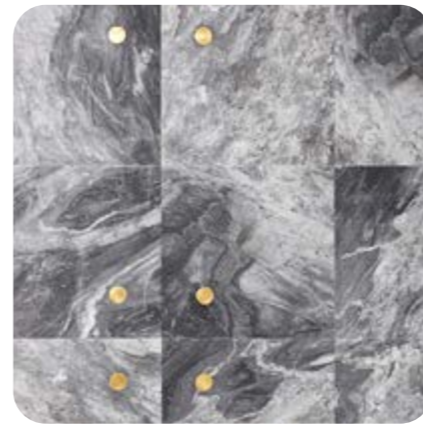
MAREA



DEDALO



IRIDE



PUNTO



CAVA



TRACCIA



SPACCO



PARALLELO



VELA

What we do... in a nutshell.

As marble specialists, we create refined wall coverings, bathroom concepts and furniture items for every setting.

For this project, we decided to focus on our Walls&Floors collection, a varied collection that brings out our close relationship with leading design studios.

We invite you to discover our collection on www.monitillo1980.it
or on our [Instagram](#) and [Facebook](#) pages.

If you would like more information about our collection please visit our website
or contact us at: **info@monitillomarmi.it**

Via Matera - 70022 Altamura Bari
Tel./Fax: +39 080 311.23.25
www.monitillo1980.it

monitillo₁₉₈₀
museum collection